



## Official Prize List

October 2 - 6, 2019



**USEF Licensed Competition**

No USEF memberships, USEF horse registrations, or non-member fees are required for horse, owner, rider, trainer or coach

### EXCEPTION

Amateur riders must have a USEF amateur card or show in the Open division

### Facility

Lazy E Arena  
Guthrie, OK



Entries Open July 1, 2019

Entries Close: September 10, 2019

## **USEF Local Competition #334526**

### **WDAA Recognition #19-100**

No USEF memberships or horse registrations are required

EXCEPTION: Amateur riders must have a USEF amateur card or show in the Open division

### **WDAA Horse Lifetime Points and Awards Program Triple Point Show**

#### **Competitor's Parties and Silent Auction**

#### **All Levels of Freestyle Offered**

#### **Four Days of Western Dressage Tests**

#### **One day of Rail Classes (Judge: Brian MacMahon)**

## **Officials**

### **Judges**

Melissa Creswick, CA, "R"

Joanne Coy, MI, "R"

Susan Lang, KS, "R"

Brian MacMahon, FL, "R"

Janet (Dolly) Hannon, CO, "R"

### **Stewards**

Joyce Hamblin, KY, "R"

Frances Newsom, TX, "R"

## **Show Staff**

### **WDAA Executive Show Committee/ WDAA Board of Directors**

Dini Swanson – WDAA Executive Director

Vivien Van Buren – Show Coordinator

Ellen DiBella – Director Emeritus – Hospitality

Cindy Butler – WDAA President – Group Apprentice Judging Clinician

Holy Clanahan Hendrix – WDAA Vice President – Press Room Coordinator

Thallia Blight – WDAA Secretary

Sharron Sarchet – WDAA Treasurer

Mike Corcoran – Ground Crew Coordinator

Lynn Shinkle, Cliff Swanson

Katharina Nowotny-Boles – Volunteer Coordinator, [katharina.nowotny-boles@newellco.com](mailto:katharina.nowotny-boles@newellco.com)

### **Show Manager**

Ms. Cindy Reid

(805) 610-9079

[CindyReid@aol.com](mailto:CindyReid@aol.com)

### **Show Secretary**

Ms. Jan Colley

(512) 565-1134

[Colley256@gmail.com](mailto:Colley256@gmail.com)

### **Entries send to:**

837 Glenlake Dr

Edmond, OK 73013

(405)760-0135

## WDAA World Show Website:

[www.wdaaworldshow.org](http://www.wdaaworldshow.org)

### Entry Website:

[www.showsecretary.com](http://www.showsecretary.com)

## Fees and Refunds

<b>A. Class Fees</b>	
Group Classes (suitability, hack, equitation)	\$70/class
Introductory and Basic Levels and Therapeutic	\$85/test
Level 1, Level 2, Level 3, Level 4	\$110/test
Freestyles	\$130/test
<b>B. Stalling Fees</b>	
Day Stall (one night)	\$120
Complete show stall (Monday-Monday)	\$200
Double stall (6 available in east barn – first come first serve)	\$400
<b>C. Administrative Fees</b>	
Office Fee (includes one Saturday dinner ticket)	\$65
USEF Fee (\$8 USEF fee + \$15 drug fee)	\$23
Late Entry	\$25/test
Change Fee (after closing date)	\$25
Non-competing horse	\$50
Post Office – Signature Required Fee	\$30

### Other Fees (optional)

Extra Saturday dinner tickets                      \$30

- Award Sponsorship information available at [www.wdaaworldshow.org](http://www.wdaaworldshow.org)

### Payment/Refunds/Cancellations

**Payment:** Entries must be postmarked by the closing date. Make checks payable to **Western Dressage Association of America**. Credit cards are accepted only if using online registration. For an entry to be accepted, a completed entry blank with signatures, a copy of the Coggins and copies of any applicable cards (or registration numbers) must be sent to show secretary.

**To register online, go to [www.showsecretary.com](http://www.showsecretary.com).** Online entries will incur a 3.5% online convenience fee. Online entries must be completed by the closing date. No credit card entries taken after closing date.

**Refunds:** Cancellations for any reason prior to the closing date will be refunded minus office fee and online convenience fee (if applicable). **No refunds after the closing date.** The show incurs many costs. Thank you for understanding.

\*\* PLEASE NOTE – ENTRIES SENT WITH SIGNATURE REQUIRED WILL INCUR A \$30 POST OFFICE VISIT FEE

## Awards

### A. Class Awards

Ribbons to 10<sup>th</sup> place will be awarded in all classes.

Choice of Vest or Jacket to the winner of each class.

Note: Wednesday flat classes will be split into groups of no more than 15 riders to ease congestion in the arena. The top 4-6 placings in each group will return for the final of that class.

Class awards and tests may be picked up at the WDAA office (covered arena) as soon as the class is placed.

### B. Musical Freestyle Classes

- **Thursday night 6:30 PM - Intro Freestyle**, entries limited to 15 rides. Awards will be presented to High Score Junior, Amateur and Open riders immediately after the last ride
- **Friday night 6:30 PM - Basic- Level 4 Costume Freestyle**, entries limited to 15 rides. Awards will be presented to High Score Junior, Amateur and Open riders immediately after the last ride
- **Saturday night 6:30 pm - Basic- Level 4 Freestyle**, entries limited to 15 rides. Awards will be presented to High Score Junior, Amateur and Open riders immediately after the last ride

### C. Farewell Celebration and Awards Ceremony

All Division, Over All High Score and Special Awards will be presented at the Farewell Celebration and Awards Ceremony, Sunday Night in the Roper's Cantina approximately 1 hour after the last class.

### D. Division Championship Awards

Suitable prize to division champion

Ribbons to 1<sup>st</sup> through 10<sup>th</sup> place

Additional awards to Champion and Reserve may be awarded at the discretion of the show committee.

### Division Calculations

Awarded to the highest average percentage of the top two scores at the level. One score MUST be from either test 3 or test 4 and the other score can be from any other test.

- Introductory Level, Basic Level, Level 1, Level 2, Level 3
  - Junior Rider
  - Amateur Rider
  - Open Rider
- Level 4
  - Amateur/Junior Rider
  - Open Rider
- Gaited Horse Introductory Level - Basic Level
  - Amateur/Junior Rider
  - Open Rider
- Gaited Horse Level 1 – Level 4
  - Open Rider

### Championships Award Notes

- In the event of a tie, the combination with the highest single percentage will earn the tie breaker
- Musical freestyles DO NOT count toward championships awards

E. **Overall High Score Awards** (based on the top score from one test across all levels excluding freestyle). High Score and Reserve High Score ribbon.

-Junior Rider (18 and under)

-Amateur Rider (19 and over)

-Open Rider

F. **Special Awards - New this year!**

- **Silver Spur Award** - highest scoring horse and rider team that equals 75 years or more in age combined.
- **Veteran High Score Award** - highest scoring horse and rider team where the rider is a veteran.
- **World Show Greenhorn Award** - rider and horse competing for the first time with the highest score. Neither horse nor rider may have ever shown at any WDAA Western Dressage World Championship Show. This Award is for Junior and Amateur riders only.

To compete for these new special awards, you must submit a registration form in the show secretary's office. Registration forms must be received before the first class on Thursday Oct 3rd.

**Breed High Score Awards**

Be certain to indicate one breed of horse on entry blank. Note: your coggins must match the breed that you indicate on your entry blank. A horse may only be classified as one breed. High score ribbon (top score from one test across all levels excluding freestyle) in the following categories:

(Division awards and Breed awards presented on Sunday evening at the farewell party)

- American Saddlebred
- Andalusian/Andalusian Cross
- Appaloosa
- American Quarter Horse
- Quarter Pony
- Arabian/Arabian Cross
- Fjord
- Friesian/Friesian Cross
- Grade/Unknown
- Gypsy
- Haflinger
- Missouri Fox Trotter
- Morgan
- Mule/Donkey
- Mustang
- National Sport Pony
- National Show Horse
- Paint
- Pinto
- POA
- Rescue
- Rocky Mountain
- Draft Horse/Shire, Percheron, Belgian Cross
- Thoroughbred
- Tennessee Walker
- Warmblood
- Welsh/Welsh Cross

Additional breeds may be added as requested and sponsored

F. **USEF Horse of the Year Awards** – This show counts toward USEF Western Dressage Horse of the Year points. **It is optional to participate in this program.** If you choose to do so, you must have all the appropriate USEF horse registrations and owner/rider memberships. For more information, please contact [www.usef.org](http://www.usef.org). Please provide horse, rider and owner USEF numbers on the entry blank.

G. **WDAA Horse Lifetime Points & Awards Program** – Scores earned at this show count triple points toward WDAA Horse Lifetime Points & Awards Program. **It is optional to participate in this program.** For more information, or to enroll in the program, please visit <http://www.westerndressageassociation.org/wdaa-horse-lifetime-points-and-awards-program/>

## Class Information

Class	Description	Day
<b>Rail Classes (8:30 am start time)*</b>		
1	WD Suitability**	Walk/Jog
	(**May not compete in any Walk/Jog/Lope classes including tests)	
2	WD Suitability	Open
3	WD Suitability	Gaited Horses
4	WD Suitability	Youth/Amateur
5	WD Hack	Open
6	WD Hack	Gaited Horses
7	WD Hack	Youth/Amateur
8	WD Seat Equitation on the Rail Walk/Jog**	Open
	(**May not compete in any Walk/Jog/Lope classes including tests)	
9	WD Seat Equitation on the Rail Walk/Jog/Lope	Open Gaited
10	WD Seat Equitation on the Rail Walk/Jog/Lope	Open
11	WD Horsemanship – Intro (Intro Pattern A)**	Open
	(**May not compete in any Walk/Jog/Lope classes including tests)	
12	WD Horsemanship – Basic (Basic Pattern A)	Amateur
13	WD Horsemanship – Basic (Basic Pattern A)	Youth (21 and younger)
14	WD Horsemanship – Level 1 (Level 1 Pattern A)	Amateur
15	WD Horsemanship – Level 1 (Level 1 Pattern A)	Youth (21 and younger)
16	WD Horsemanship – Level 2 (Level 2 Pattern A)	Amateur
17	WD Horsemanship – Level 2 (Level 2 Pattern A)	Youth (21 and younger)
18	WD Seat Medal Equitation – Basic (Basic Pattern B)	Amateur
19	WD Seat Medal Equitation – Basic (Basic Pattern B)	Youth (21 and younger)
20	WD Seat Medal Equitation – Level 1 (Level 1 Pattern B)	Amateur
21	WD Seat Medal Equitation – Level 1 (Level 1 Pattern B)	Youth (21 and younger)

\* Rail classes will run back to back and exhibitors are responsible to keep track of the pace of the show and be on time for classes.

Tests and Patterns - <https://www.westerndressageassociation.org/docs/WD-SeatEquitationTests-AppendixA-Jan-2014.pdf>

	Open	JR	AMT	Gaited Open	Gaited AM/JR	
<b>Introductory Level</b>						
WDAA Introductory Level Test 1	I1O	I1J	I1A	I1GO	I1GAJ	Thursday
WDAA Introductory Level Test 2	I2O	I2J	I2A	I2GO	I2GAJ	Friday
WDAA Introductory Level Test 3	I3O	I3J	I3A	I3GO	I3GAJ	Saturday
WDAA Introductory Level Test 4	I4O	I4J	I4A	I4GO	I4GAJ	Sunday
<b>Basic Level</b>						
WDAA Basic Level Test 1	B1O	B1J	B1A	B1GO	B1GAJ	Thursday
WDAA Basic Level Test 2	B2O	B2J	B2A	B2GO	B2GAJ	Friday
WDAA Basic Level Test 3	B3O	B3J	B3A	B3GO	B3GAJ	Saturday
WDAA Basic Level Test 4	B4O	B4J	B4A	B4GO	B4GAJ	Sunday

	Open	JR	Amt.	Gaited Open	Gaited AM/JR	
<b>Level 1</b>						
WDAA Level 1 Test 1	110	11J	11A	11GO		Thursday
WDAA Level 1 Test 2	120	12J	12A	12GO		Friday
WDAA Level 1 Test 3	130	13J	13A	13GO		Saturday
WDAA Level 1 Test 4	140	14J	14A	14GO		Sunday
<b>Level 2</b>						
WDAA Level 2 Test 1	210	21J	21A	21GO		Thursday
WDAA Level 2 Test 2	220	22J	22A	22GO		Friday
WDAA Level 2 Test 3	230	23J	23A	23GO		Saturday
WDAA Level 2 Test 4	240	24J	24A	24GO		Sunday
<b>Level 3</b>						
WDAA Level 3 Test 1	310	31J	31A	31GO		Thursday
WDAA Level 3 Test 2	320	32J	32A	32GO		Friday
WDAA Level 3 Test 3	330	33J	33A	33GO		Saturday
WDAA Level 3 Test 4	340	34J	34A	34GO		Sunday
<b>Level 4</b>						
WDAA Level 4 Test 1	410	41AJ		41GO		Thursday
WDAA Level 4 Test 2	420	42AJ		42GO		Friday
WDAA Level 4 Test 3	430	43AJ		43GO		Saturday
WDAA Level 4 Test 4	440	44AJ		44GO		Sunday
<b>Freestyle Classes (6:30 pm Evening Classes)</b>						
	<b>Open</b>			<b>Gaited Open</b>		
Introductory Freestyle Placed by Junior, Amateur, and Open	FSI			FSGI		Thursday (limited to 15 first riders entered)
Costume Freestyle Test of Choice (Basic – Level 4) Placed by Junior, Amateur, and Open	FSC-B4			FSCG-B4		Friday (limited to 15 first riders entered)
Freestyle Test of Choice (Basic – Level 4) Placed by Junior, Amateur and Open	FS-B4			FSG-B4		Saturday (limited to first 15 riders entered)
<b>Physically Challenged/Heroes on Horses (Exhibition Only)</b>						
PC/HoH test of choice				PH1		Friday
PC/HoH test of choice				PH2		Saturday
<b>Therapeutic Riding Classes (Exhibition Only)</b>						
Therapeutic Riding				TR1		Friday
Therapeutic Riding				TR2		Saturday

## Competitor's Hospitality and Services

### **We are planning several parties including:**

- Coffee Bar every morning (WDAA Office)
- Tuesday welcome party and Exhibitor meeting (sponsorship available)
- Friday Costume Freestyle Cocktail Party (free to all – sponsorship available)
- Saturday Night Freestyle Fiesta dinner and silent auction (one free ticket with office fee – sponsorship available)
- Sunday Award Ceremony and Farewell Celebration – Sunday afternoon/evening to award high point and division prizes (free to all – Division Awards are presented – so plan to attend – sponsorship available)
- Daily Afternoon snacks (WDAA Office)

**World Show Videographer and Exclusive Video Partner:** Total Horse Channel [www.totalhorsechannel.com](http://www.totalhorsechannel.com)

**World Show Photographer:** Don Stine Equine Sports Photography [www.donstine.com](http://www.donstine.com) • [dstine@donstine.com](mailto:dstine@donstine.com)

## Competition Rules

**USEF Membership:** This is a USEF local competition. NO USEF memberships, non-member fees, or horse registrations are required to compete in this show. EXCEPTION: Amateur riders must have a USEF amateur card. Foreign riders requesting Federation Amateur status, must be a Junior, Senior or Life Competing Member of the Federation (Exception: Equestrian Canada members in possession of current EC membership may sign for USEF Amateur status on a show by show basis at no cost).

**WDAA Memberships:** All owners, trainers, and riders **MUST be a member of WDAA** to compete in this show. You may join WDAA at [www.westerndressageassociation.org](http://www.westerndressageassociation.org).

**Amateur Status:** If you are entering amateur classes, you will need to provide proof of amateur status with your entry. If you do not provide proof of amateur status, you will be placed in the open division. Because this is a USEF recognized show, the only acceptable proof of amateur status is a USEF Amateur card. Please see <http://www.usef.org> for more information on obtaining an amateur card. [GR 1306 and GR 1307](#).

**Junior Status:** Riders are eligible to compete as juniors if they are 17 years of age or less at the beginning of the 2019 competition year (December 1, 2018 – November 30, 2019). [GR 103](#).

**Young Rider:** Riders 21 and younger at the beginning of the 2019 competition year (December 1, 2018 – November 30, 2019). [GR 103](#).

**Numbers:** You will be provided with a back number and a bridle/halter number for each horse/rider combination. All horses (competing and non-competing) must wear show numbers when they are outside of the stall. Each horse/rider combination will be assigned a unique number. Horses must always have a bridle number attached when outside of their stall.



## **Class Restrictions**

- Horses may be ridden by two riders. Each horse/rider combination requires a separate entry with all signatures and emergency contact. [WD 102](#)
- No horse may be ridden in the same class number more than once (even with a different rider) per [WD 102.2](#)
- Horses who have shown in Western Hack are no longer eligible for Western Suitability.
- Horse/rider combinations showing in walk/jog rail classes are not eligible for other rail classes or any test other than Introductory Level (Different horse/rider combinations are eligible for other rail classes and tests)
- Horses may not compete in more than 6 tests per day.
- Horses may only compete in levels that are adjacent with the same rider. For example, a horse may not be ridden in a basic level test and a level two test UNLESS with a different rider. [WD 102.](#)
- A horse may be ridden by a maximum of two riders. [WD 102.](#)

**Horses Not Competing:** Non-showing horses are allowed on the grounds if space is available. The owner must enter the horse on an entry form, pay office, stall, and non-competing horse fees and meet all health requirements.

**Tests:** We will be using the 2017 WDAA/USEF Western Dressage tests which are available at [www.westerndressageassociation.org](http://www.westerndressageassociation.org).

**Attire and Equipment:** USEF rules and guidelines will be used for attire and equipment. For more information please review the USEF rule by clicking this link [WD 120 121 122 123](#).

**Dogs:** Well-mannered and quiet dogs are allowed on the grounds but must be on a leash or restrained always. No dogs in show ring or warm-up ring. Proof of current rabies must be available upon request.

**Sharps Containers:** Competition management shall place at least one sharps container per every fifty horses entered in stabling area for the disposal of needles and other disposable sharp instruments. It is competition management's responsibility to replace such containers when full and dispose of them properly. Competition management may fine any individuals, including trainers, owners, exhibitors or their agents up to \$100 for improper disposal of needles or other sharp disposable instruments. If local law has different requirements, local law will prevail.

**Hazardous weather, Acts of God, Accident Policy:** Management reserves the right to cancel any classes due to hazardous weather, Acts of God, accidents, or emergencies. Every effort will be made to reschedule. No refunds for cancellations due to hazardous weather, Acts of God, accidents, or emergencies.

**Other:** Every class offered herein which is covered by the rules and specifications of the current rules and of the current USEF/WDAA rules will be judged in accordance therewith.

## Entries, Scheduling, and Scoring

### A. General Information:

Entries must be post marked by the closing date. Make checks payable to WDAA. To pay with a credit card, you must use online entry. Please visit [www.showsecretary.com](http://www.showsecretary.com) for online entry. Every horse/rider team requires a separate entry and office fee. **The USEF drug fee is paid once per horse. Email entries are NOT accepted.**

A copy of a negative Coggins test taken within the 12 months of the show date and vaccination record (Equine Influenza Virus and Equine Herpes Virus "Rhinopneumonitis" within 6 months of show date) must accompany each entry. GR 845.

**NEW HEALTH CERTIFICATE REQUIREMENTS FOR CERTAIN COUNTIES OF ORIGIN All horses, donkeys and mules on grounds require a Certificate of Veterinary Inspection within thirty (30) days of arrival and a negative Coggins test within 12 months. Original copy or photocopy of Coggins test must be presented.**

**Any livestock entering Oklahoma from a county where Vesicular Stomatitis has been diagnosed within the last thirty days or a county that contains a premise quarantined for Vesicular Stomatitis shall be accompanied by a certificate of veterinary inspection dated within five (5) days of entry containing the following statement:**

**"All animals identified on this certificate of veterinary inspection have been examined and found to be free from signs of Vesicular Stomatitis and have not originated from a premise which is under quarantine for Vesicular Stomatitis."**

**The website: <http://equinediseasecc.org/alerts/outbreaks> notes all states and counties with current outbreaks. It is your responsibility to comply with this rule and all paperwork will be checked prior to any animals being unloaded from trailers.**

**If any paperwork is not in compliance with the above requirements, the animals will not be able to unload. You may utilize an on-call veterinarian or go to a local vet clinic to have your animals examined and to obtain the required health certificates.**

**Move-in begins on Monday at noon. Hours of move-in are Monday from noon-9pm, Tuesday-Thursday 7am to 9pm and Friday 9am-5pm. Stabling office staff will check all paperwork during those hours. Anyone arriving outside the stated hours must call the number posted at the stabling office upon arrival and on-call stabling staff will check your paperwork.**

All fees must be paid, and information supplied before receiving packet.

Entries are accepted on a first-come, first-served basis, based on postmark date. Entries may be limited.

Late entries are accepted on a space-available basis and charged a \$25/class late fee.

If the classes are oversubscribed, a "wait list" will be maintained. Horses will be moved into the show based on wait list order prior to scheduling. After the show has been timed, show secretary will work wait list horses into the show based on the best fit with the schedule. Management reserves the right to refuse any entry.

**Please include WDAA membership number for Owner, Rider, Trainer and Coach. If not provided you will be placed on the waitlist until those numbers are provided. Entry is not complete without providing these numbers.**

## **B. Scheduling**

Ride Conflicts: Competitors with multiple horses and horses with multiple riders are urged to bring enough help. If a conflict is discovered, notify the show secretary immediately.

Final Salute Directions: The show must stay on schedule or riders with multiple horses will experience conflicts in different arenas. To help with this, after your second salute, please walk forward a few steps and turn toward A. In other words, do NOT walk all the way to C before turning to exit the arena.

Freestyle scheduling: Freestyle classes will run after arena 1 and arena 2 rides are complete for the day. The indoor will be used for freestyles. All freestyles (including Introductory and Basic) will be in the 20x60 arena.

Management reserves the right to change officials, limit entries, combine or cancel classes, and modify the schedule to make whatever changes are required by circumstances to the competition specifications listed herein. Management reserves the right to cancel classes insufficiently filled and to refuse or require withdrawal of an entry for cause deemed enough by Show Management.

## **C. Official Ride Times**

Acknowledgements: Entries will be acknowledged via email upon receipt by the show secretary.

Provisional Ride Times: Provisional ride times will be available on <https://www.showsecretary.com> about one week prior to the show. Additionally, they will be emailed.

Day Sheet: Be certain to check the day sheet, which will be posted by 7pm the night before each show day. It will reflect any last-minute scheduling changes. The day sheet will be posted in the show office located by the west door of the indoor arena. Ride times listed on <https://www.showsecretary.com> will be consistent with the day sheet after 7pm.

Musical freestyle sound check is 6 pm Wednesday evening. Take your music to the announcer in ring 1. Music must be on a flash drive with a MP3 format. No CDs.

## **D. Scores**

Tests will be scored electronically and streamed continuously. You may check your score at [www.showsecretary.com](http://www.showsecretary.com). Scores will also be posted near the show office (indoor arena near west doors).

It is the responsibility of the competitor to verify the accuracy of all scores. Scoring errors must be reported to the Show Secretary within one hour of the official posting of the scores from the last class of the show day during which the score was earned.

## Facility Information

### A. Office Hours

#### **Horse Show Office – located just inside the west doors of the indoor arena**

- Dates: Tuesday, October 1 through Sunday, October 6. Hours: 8 am to 1 hour after show

#### **WDAA Office – located at the end of the covered arena**

- Dates: Tuesday, October 1 through Sunday, October 6. Hours: 8 am to 1 hour after show

#### **Tentative Stalling Office Hours**

Monday	noon to 9 pm
Tues, Wed, Thurs	7 am to 9 pm
Fri, Sat	9 am to 5 pm
Sun	on call only

Please stop at the stalling office to show your health papers prior to unloading. Stalls are locked.

Preordered shavings will be in stalls. Stalling office staff will unlock your stall.

Stall chart will be loaded on show website at least one week prior to move in day. Notify the show secretary immediately with any questions.

### B. Stabling

**Stalls:** All horses must be in a stall. Stalls are permanent and 10ft x 10ft on dirt floor with doors. Stall fee does **NOT** include initial shavings. Double stalls are available in the east barn only.

**Shavings:** Shavings **MUST** be purchased through Lazy E Arena. **NO OUTSIDE SHAVINGS ALLOWED.** Contact the Lazy E Arena business office at 800-595-RIDE (7433) for reservations. Alternately, you may purchase shavings upon arrival at the stalling office.

**Availability:** Stalls are available Monday, September 30 beginning at noon. Stalls must be vacated by noon, Monday, October 7 unless arrangements are made with the Lazy E for additional days. See above for stall office hours.

**Early Arrival and Extended Stay:** Contact the Lazy E Arena business office 800-595-RIDE (7433) for reservations if you plan to arrive before noon on Monday, September 30 or stay beyond noon on Monday, October 7. This service is available but must be arranged through the Lazy E. Note Early Arrivals will need to closely follow Lazy E guidelines as the facility is being used by a non-horse related function on the weekend before the show.

**Groups:** Please note stalling groups with your entry. Your group should decide on a “group name” that all competitors provide on their entry.

**Priority Stalling:** End stalls will be allocated based on group size and sponsorship. In other words, groups sponsoring a division (or other sponsorship level of at least \$250), will receive priority for an end stall. There are 22 end stalls in the west barn but 3 have wash racks. Another 22 end stalls are available in the east barn.

### **C. Arenas**

Footing Sand/clay show rings and warm-up inside

**Arena Size:** Four show arenas. The small ring (20m x 40m) will be used for Introductory and Basic level. All other classes will be in the standard 20m x 60m ring. All freestyles will be held in the 20m x 60m arena.

### **Schooling:**

**Tuesday:** Horses may work in all the show rings from 7 am to 10 p.m.

**Wednesday:** Horses may work in Rings 3 and 4 all day (7 am to 10 pm). Rings 1 and 2 will open for schooling from after the completion of group classes (classes 1-21) at approximately 6 pm until 10 pm.

Hand walking around the show arenas on the show day is permitted prior to the show beginning. Lunging is available in designated areas only. These areas will be clearly marked.

**D. Accommodations Hotels - Reserve ASAP, blocks end mid Sept but are filling up quickly.**

---

**Guthrie Area Hotels**

**Hampton Inn and Suites – Guthrie, OK**

401 Cimarron Blvd Guthrie, OK 73044

(405) 293-9595 <https://www.reservationdesk.com/Hampton Inn/Guthrie>

Ask for the WDAA rate, 15% off Best Available Rate

**Holiday Inn Express – Guthrie, OK - \$89.00 + tax**

2227 E Oklahoma Ave. Guthrie, OK 73044 (405) 293-6464

Block name under “WDAA or Western Dressage World Championship Show” Reservations must be made by 9/1/2019

---

**Edmond Area Hotels**

\*The first 3 Edmond hotels are offering a discount to those that mention the LAZY E DISCOUNT at booking for a %10 discount, Free hot breakfast, Free Wi-Fi.

**Fairfield Inn & Suites by Marriott – Edmond, OK**

301 Meline Drive, Edmond, OK 73034

Office: 405-341-4818 [www.marriott.com/okced](http://www.marriott.com/okced)

**LaQuinta Inn & Suites – Edmond, OK**

200 Meline Drive, Edmond, OK 73034

Office: 405-513-5353 [www.6420.lq.com](http://www.6420.lq.com)

**Hampton Inn Edmond**

300 Meline Drive, Edmond, OK 73034

Office: 405-844-3037 [www.hamptoninn3.hilton.com](http://www.hamptoninn3.hilton.com)

**Hilton Garden Inn Edmond/OKC North - Edmond, OK**

2833 Conference Dr Edmond, OK 73034

(405)285-0900 Ask for the WDAA rate. [www.hiltongardeninn3.hilton.com](http://www.hiltongardeninn3.hilton.com)

---

**North East OKC Area Hotels**

**Hampton Inn OKC Northeast – From \$89.00 +tax**

11820 N I-35 Service Road. Oklahoma City, OK 73131

[https://secure3.hilton.com/en\\_US/hp/reservation/book.htm?inputModule=HOTEL&cityhcn=OKCNEHX&spec\\_plan=CHHWDA&arrival=20191001&departure=20191007&cid=OM,WW,HILTONLINK,EN,DirectLink&fromId=HILTONLINKDIRECT](https://secure3.hilton.com/en_US/hp/reservation/book.htm?inputModule=HOTEL&cityhcn=OKCNEHX&spec_plan=CHHWDA&arrival=20191001&departure=20191007&cid=OM,WW,HILTONLINK,EN,DirectLink&fromId=HILTONLINKDIRECT)



## **RV**

Hookups are available for \$60/night (water, power and sewer by arena); \$50/night (water, power by stall); \$40/night (water and power only by arena). Contact the Lazy E Arena business office 800-595-RIDE (7433) for reservations. (This is recommended for groups who would like spaces together.) Or, you may reserve an RV hookup when you arrive at the stall office.

## **E. Facility Location and Parking**

Take exit 151 for Seward Road

Turn right onto Seward Road & go 2.5 miles Continue onto Douglas Blvd for 1 mile

Turn left onto E. Forrest Hills Rd and go .7 miles Turn right onto Lazy E Drive.

Google maps address 9600 Lazy E Drive Guthrie, OK 73044 Parking: Sufficient parking for trailers and vehicles.

**F. Concessions:** Food will be available during the show.

## **G. Veterinarian and Farrier on call**

**Veterinarian:** Equine Medical Associates / Dr. J. Mike Johnston

**Vet Address:** 2625 W I-35 Frontage Rd, Edmond, OK 73013

**Vet Phone Number:** 405-348-3130

**Farrier:** Bill Caywood 405-249-2166

**How to contact:** Phone numbers and information will also be posted throughout the show grounds including the show office.

## **H. Nearest Surgical Facility:** Oakridge Equine Hospital

o Address: 6675 E. Waterloo Road, Edmond, OK 73034

o Phone: 405-359-5002

o Directions (5.9 miles to Oakridge Equine Hospital)

Head northwest on Lazy E Dr toward Lakecrest Ct for .5 miles

Turn left onto E. Forrest Hills Rd and drive .7 miles

Turn left on to S. Douglas Blvd and drive 4 miles

Turn right onto NE 248<sup>th</sup> (E. Waterloo Rd) and drive .7 miles

Destination will be on the right





## **Required USEF Statements**

### **A. GR845 Equine Vaccination Rule**

At Federation licensed competitions, horses entering the grounds must be accompanied by documentation of Equine Influenza Virus and Equine Herpes Virus (Rhinopneumonitis) vaccinations within six months prior to entering the stables. Horses not in compliance with this rule may be required to leave the competition grounds upon request by Competition Management. Documentation should consist of one of the following methods mentioned below. The frequency of vaccine administration should be per the vaccine manufacturers' or veterinarian's recommendations. It is recommended that vaccines are administered by or under the direction of a veterinarian. **2.** In the case of vaccines administered by a veterinarian, the exhibitor, upon request by Competition Management, must provide documentation from the veterinarian on documenting that the horse in question received the vaccinations; name of the vaccines and date of vaccine administration.

In the case of vaccines administered by a person other than a veterinarian, the exhibitor, upon request by Competition Management, must provide a receipt of the vaccine purchase which is signed by the owner, or agent with care, custody, and control of the horse; name, serial number and expiration date of the vaccine; and date of vaccine administration. **4.** In the case of a horse that is unable to receive either of the vaccinations due to a history of adverse reactions, the exhibitor, upon request by Competition Management, must provide a letter from the veterinarian on official letterhead stating that the horse in question cannot be vaccinated due to medical concerns and a log of temperatures taken twice daily for the seven days prior to entering the competition grounds. These horses must also have their temperature taken and logged twice daily while on the competition grounds. The log of temperatures should be provided to the Competition Management, steward, or technical delegate when requested. **5.** Competition Management may not amend or enhance vaccination requirements without prior approval of the Veterinary Committee. BOD 1/17/15 Effective 12/1/15.

### **B. Motorized Vehicle Statement**

In accordance with GR1301.7: Minors who do not have a valid driver's license which allows them to operate a motorized vehicle in the state in which they reside will not be permitted to operate a motorized vehicle of any kind, including, but not limited to, golf carts, motorcycles, scooters, or farm utility vehicles, on the competition grounds of licensed competitions. Minors who have a valid temporary license may operate the above described motorized vehicles as long as they are accompanied by an adult with a valid driver's license. The parent(s), legal guardian(s), or individual who signs the entry blank as a parent or guardian of a minor operating a motorized vehicle in violation of this rule are solely responsible for any damages, claims, losses or actions resulting from that operation. Violations of this rule will be cause for sanctions against the parent(s), guardian(s) and/or trainer(s) who are responsible for the child committing the offense. Penalties may include exclusion of the child, parent(s), guardian(s), and/or trainer(s) from the competition grounds for the remainder of the competition and charges being filed against any of the above individuals in accordance with Chapter 6. Wheelchairs and other mobility assistance devices for individuals with disabilities are exempt from this rule.

### **C. USEF Membership Statement**

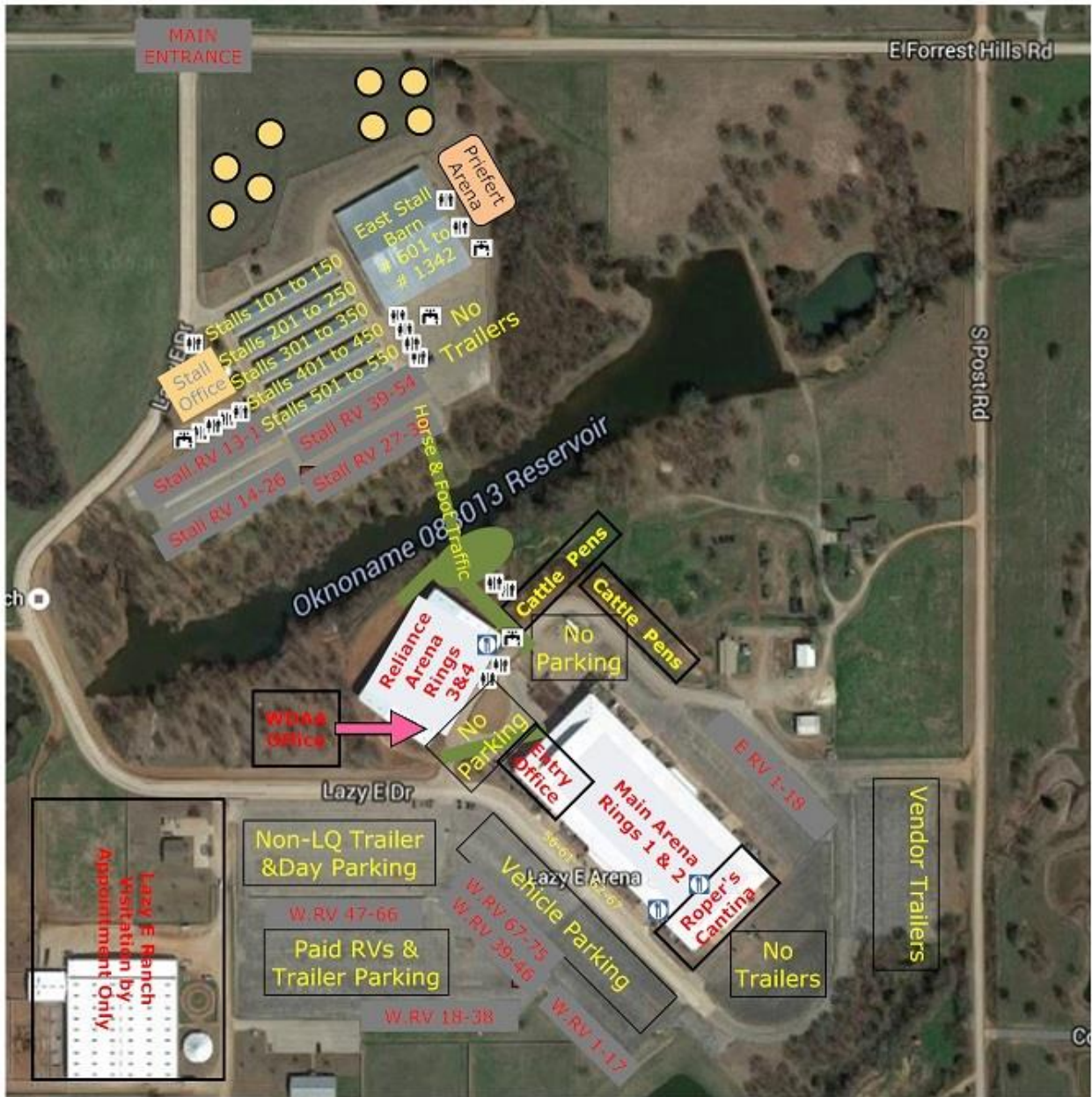
Life, senior active and junior active members shall be eligible to participate in all classes at Regular Competitions, Eventing Competitions at the Preliminary Level or above and Combined Driving Competitions at the Advanced Level, Dressage, Reining and Vaulting Competitions and Endurance Rides. A nonmember may participate as a handler, rider, driver, owner, lessee, agent, coach or trainer at Regular Competitions, Eventing Competitions, Dressage Competitions, Reining Competitions and Combined Driving Competitions upon payment of a \$45 Show Pass fee. Participants in the following classes are exempted from the Requirements of this rule: 1) leadline; 2) exhibitions; 3) games and races; 4) classes for 4-H members; 5) walk trot (exception: Friesian performance FR222) and academy classes (academy classes are classes limited to horses used regularly in a lesson program); 6) USDF introductory level tests, pas de deux and quadrille classes; 7) NRHA Endorsed Reining Competitions. 8) Opportunity classes, 9) citizens of other nations who have proof, in English, of current membership in good standing of their own National Federation, 10) USEA beginner novice division; and 11) assistant handlers in Dressage Sport Horse Breeding classes.

### **D. Federation Entry Agreement**

By entering a Federation-licensed Competition and signing this entry blank as the Owner, Lessee, Trainer, Manager, Agent, Coach, Driver, Rider, Handler, Vaulteur or Longeur and on behalf of myself and my principals, representatives, employees and agents, I agree that I am subject to the Bylaws and Rules of The United States Equestrian Federation, Inc. (the "Federation") and the local rules of the Competition. I agree to be bound by the Bylaws and Rules of the Federation and of the competition. I will accept as final the decision of the Hearing Committee on any question arising under the Rules, and agree to release and hold harmless the Competition, the Federation, their officials, directors and employees for any action taken under the Rules. I represent that I am eligible to enter and/or participate under the Rules, and every horse I am entering is eligible as entered. I also agree that as a condition of and in consideration of acceptance of entry, the Federation and/or the Competition may use or assign photographs, videos, audios, cable-casts, broadcasts, internet, film, new media or other likenesses of me and my horse taken during the course of the Competition for the promotion, coverage or benefit of the Competition, sport, or the Federation. Those likenesses shall not be used to advertise a product and they may not be used in such a way as to jeopardize amateur status. I hereby expressly and irrevocably waive and release any rights in connection with such use, including any claim to compensation, invasion of privacy, right of publicity, or to misappropriation. The construction and application of Federation rules are governed by the laws of the State of New York, and any action instituted against the Federation must be filed in New York State. See GR908.4.



# Lazy E Facility Map



# YOU ARE NOT ALONE



**US Equestrian wants you to know:  
If you are a victim of sexual abuse or suspect someone else is, there are resources and people to help.**

## **REPORT**

**720-524-5640 or [safesport.org/report-a-concern](https://safesport.org/report-a-concern)**

## **24/7 HELPLINE**

**866-200-0796 or visit [safesporthepline.org](https://safesporthepline.org)**

## **TRAINING**

**Free to US Equestrian members at [usef.org/safesport](https://usef.org/safesport).**

**#youarenotalone**



**2019 WDAA World Championship Show  
Entry Blank  
(please complete a separate entry blank for each horse/rider combination)**

**Horse Information**

Name \_\_\_\_\_ Sex \_\_\_\_\_ Color \_\_\_\_\_ Height: \_\_\_\_\_  
 Breed \_\_\_\_\_ Year of Birth: \_\_\_\_\_ For Sale \_\_\_\_ Yes \_\_\_\_ No  
 Horse USEF # (Optional): \_\_\_\_\_

**Rider Information**

Name \_\_\_\_\_ **WDAA #** \_\_\_\_\_ USEF # (optional unless amateur): \_\_\_\_\_  
 Address \_\_\_\_\_ City, State, Zip \_\_\_\_\_  
 Cell Phone \_\_\_\_\_ Email \_\_\_\_\_  
 Rider Division \_\_\_\_\_ Open \_\_\_\_\_ Junior \_\_\_\_\_ Adult Amateur

**Owner Information**

Name \_\_\_\_\_ **WDAA #** \_\_\_\_\_ USEF # (Optional) \_\_\_\_\_  
 Address \_\_\_\_\_ City, State, Zip \_\_\_\_\_  
 Cell Phone \_\_\_\_\_ Email \_\_\_\_\_

**Trainer Information**

Name \_\_\_\_\_ **WDAA #** \_\_\_\_\_ USEF # (optional) \_\_\_\_\_  
 Cell Phone \_\_\_\_\_ Email \_\_\_\_\_

**Class Information**

Number _____	Description _____	Fee _____
Number _____	Description _____	Fee _____
Number _____	Description _____	Fee _____
Number _____	Description _____	Fee _____
Number _____	Description _____	Fee _____
Number _____	Description _____	Fee _____
Number _____	Description _____	Fee _____
Number _____	Description _____	Fee _____
Number _____	Description _____	Fee _____
Number _____	Description _____	Fee _____
Total Class Fees _____		

**Stabling Fees**

Horse Stalls \_\_\_\_\_ Mon – Mon (\$200) \_\_\_\_\_ One Night Stall (\$120)  
Tack Stalls \_\_\_\_\_ Mon – Mon (\$200) \_\_\_\_\_ One Night Stall (\$120)  
Total Stall Fees \_\_\_\_\_ Stabling Group \_\_\_\_\_

**Other Fees**

Office Fee (\$65) \_\_\_\_\_ Sponsorship (please include form) \_\_\_\_\_  
USEF Fee (\$23/horse) \_\_\_\_\_ Extra Saturday Dinner Ticket (\$30) \_\_\_\_\_  
Late Fee (\$25/test) \_\_\_\_\_ Non-Competing Horse (\$50) \_\_\_\_\_  
Total Other Fees \_\_\_\_\_

**Payment Summary**

Class Fees \_\_\_\_\_  
Stalling Fees \_\_\_\_\_  
Other Fees \_\_\_\_\_  
Total Fees \_\_\_\_\_

**Credit Card Payments are available through online entry**  
**Please visit [www.ShowSecretary.com](http://www.ShowSecretary.com)**  
**Make checks payable to:**  
Western Dressage Association of America  
Mail entry and payment and coggins/vaccinations to:  
Susan Peacock, 837 Glenlake Dr, Edmond, OK 73013

**Liability Release and Required Signature**

This document waives important legal rights. Read it carefully before signing.

I have read the United States Equestrian Federation, Inc (“the Federation”) Entry Agreement (GR 906.4) as printed in the prize list for this competition and agree to all of its provisions. I understand & agree that by entering this Competition, I am subject to the Federation Rules, the Prize List, & any local rules of the competition. I agree to waive the right to the use of my photos at the competition & agree that any actions against the Federation must be brought in New York State. I AGREE in consideration in my participation in the WDAA World Championship “COMPETITION” to the following:

I AGREE that COMPETITION as used herein includes United States Equestrian Federation, Competition Management, Western Dressage Association of America as well as all of their officials, officers, directors, employees, agents, personnel, and volunteers.

I AGREE that I have read the complete prize list and that I understand that no money will be refunded after that closing date.

I AGREE that I choose to participate voluntarily with my horse in COMPETITION as a rider, handler, longeur, lessee, owner, agent, coach trainer or as parent/guardian of a junior exhibitor. I am fully aware and acknowledge that horse sports and competition involve inherent dangerous risk of accident, loss, and series bodily injury including broken bones, head injuries, trauma, pain, suffering or death (“Harm”).

I AGREE to hold harmless and release COMPETITION from all claims for money damages or otherwise or any harm to me or my horse and for any harm of any nature caused by me or my horse to others even if the harm arises or resulted directly or indirectly from the negligence of the COMPETITION. I AGREE to expressly assume all risk of Harm to me or my horse including Harm resulting from the negligence from the COMPETITION.

I AGREE to indemnify (that is, to pay any losses, damages, or costs incurred by) the COMPETITION and to hold them harmless with respect to claims for harm to me or my horse, and for claims made by others for any harm caused by me or my horse while at the COMPETITION. I understand that I am entitled to wear protective equipment without penalty but recognize that no protective equipment can guard against all injury. If I am a parent or guardian of a junior exhibitor, I consent to the child’s participation and AGREE to all of the above provisions and AGREE to assume all of the obligations of this Release upon the child’s behalf. I represent that I have the requisite training, coaching, and abilities to safely compete in this COMPETITION.

If signing electronically, I acknowledge that my electronic signature shall have the same validity, for and effect as if I affixed my signature by my own hand.

Owner’s Signature \_\_\_\_\_ Print Owner Name \_\_\_\_\_

Rider Signature \_\_\_\_\_ Print Rider Name \_\_\_\_\_

Trainer Signature \_\_\_\_\_ Print Trainer Name \_\_\_\_\_

Parent/Guardian Signature \_\_\_\_\_ Parent/Guardian Name \_\_\_\_\_  
(Rider is under 18)

**Rider Emergency Contact Information**

Name \_\_\_\_\_ Phone \_\_\_\_\_

As a participant in the Western Dressage Association of America World Championship Show for myself and for my respective heirs, executors, administrators and assigns, do hereby give full right and permission to use my likeness, photograph(s), voice and/or name, and do hereby grant permissions to WDAA to use my likeness, photographs, videos of rides on horses at the WDAA World Championship Horse Show.

I understand that these materials will be used for educational purposes, promotion of the WDAA World Championship Show in a variety of programs to benefit Western Dressage and the Western Dressage Association of America.

Rider Signature \_\_\_\_\_ Owner Signature \_\_\_\_\_



To submit and pay online, please go to  
<http://www.wdaaworldshow.org>

## 2019 WDAA World Show Award Sponsorship Form

Award Sponsor Name for program \_\_\_\_\_

Sponsor Name if different \_\_\_\_\_

Email \_\_\_\_\_ Phone \_\_\_\_\_

Mailing Address \_\_\_\_\_

Website \_\_\_\_\_

### **Individual Class Sponsor \$100.00 each** - Please specify which classes you would prefer to sponsor

\*Wednesday rail classes – see prize list for classes offered

\*Intro – Level 3, Open, Amateur, Junior. Tests 1-4

\*Level 4 Open, Amateur /Junior. Tests 1-4

\*Gaited Horses, Intro & Basic Open, Amateur/Junior, Level 1-Level 3 Open, Level 4 Test of Choice. Tests 1-4

\*Freestyles (Saturday Evening) Test of choice Intro-Level 4 Open, Amateur, Junior.

\*Costume Freestyles (Friday Evening) Test of choice Intro-Level 4 Open, Amateur, Junior.

\*Intro Freestyles (Thursday Evening) Open, Amateur, Junior.

---

### **Division Award (Buckle) Sponsorship \$250.00 each.** Please specify which Divisions you would prefer to sponsor

---

### **Breed High Score Award \$100.00 each.** Please specify which breeds you would prefer to sponsor

---

Total Sponsorship \_\_\_\_\_

Check enclosed  Please mail checks to: WDAA PO Box 2349 Parker, CO 80134

Questions? Contact one of the following;

Nichole Oster [nmoster@gmail.com](mailto:nmoster@gmail.com) , Jenny McBurnett [jennifer.mcburnett@gmail.com](mailto:jennifer.mcburnett@gmail.com),

Susan Johnson [susanglenjohnson7@gmail.com](mailto:susanglenjohnson7@gmail.com), Kristen Whittaker [whit.acres@verizon.net](mailto:whit.acres@verizon.net),

Sara Breyman [tripleddb@aol.com](mailto:tripleddb@aol.com) ,

Dini Swanson [info@westerndressageassociation.org](mailto:info@westerndressageassociation.org) WDAA – 720-662-4584





To pay online, please go to <http://www.wdaaworldshow.org>

### 2019 WDA World Show Program Ad form

Advertiser's name \_\_\_\_\_

Contact name if different \_\_\_\_\_

Email \_\_\_\_\_ Phone \_\_\_\_\_

Mailing Address \_\_\_\_\_

Website \_\_\_\_\_

#### Ad prices and specs

Full Page color inside front/outside back cover \$1,500.00

Full Page Color \$1,000.00

Full Page B&W \$500.00

(FULL PAGE SPECS - Full Page ad - 7.5"x10", Full Page ad with bleed - 8.75"x11.25")

½ Page Color \$500.00

½ Page B&W \$250.00

(HALF PAGE SPECS - Half Page vertical ad - 3.63"x10", Half Page horizontal ad - 10"x4.86")

¼ Page B&W \$100.00

(QUARTER PAGE SPECS - 3.63"x4.86")

Business Card \$25.00

For advertisers unable to supply their own camera-ready ads, Jana Thomason can help you! JT Creative Design & Photography LLC [janad.thomason@gmail.com](mailto:janad.thomason@gmail.com) 405-227-4449 Call or email for pricing.

All ads must be submitted to Jana Thomason no later than Sept 3<sup>rd</sup>. Ads need to be 300 dpi, CMYK or Grayscale for black and white ads. Preferred file format is PDF. EPS and TIF acceptable.

Total program ad payment \_\_\_\_\_

Check enclosed  Please mail checks to: WDA PO Box 2349 Parker, CO 80134

Questions? Contact Dini Swanson [dini@westerndressageassociation.org](mailto:dini@westerndressageassociation.org) WDA – 720-662-4584